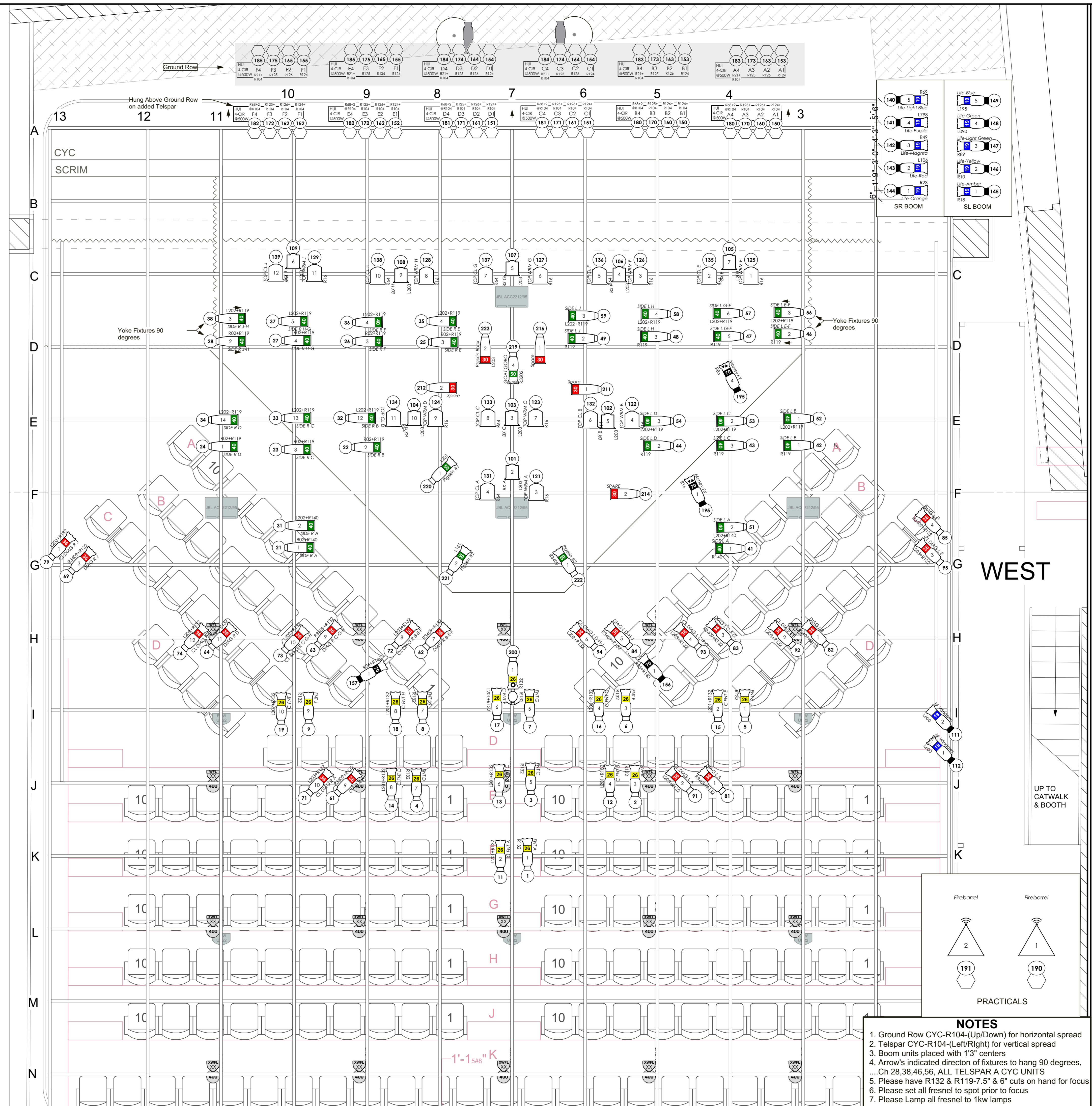


SOUTH

CENTERLINE SECTION LOOKING EAST

NORTH



	ETC S4 19 ERS @ 750w	12
	ETC S4 26 ERS @ 575w	19
	ETC S4 36 ERS @ 575w	20
	ETC S4 50 ERS @ 575w	4
	ETC SOURCE 4 70 DEG @ 750w	4
	Colortran 30 Degree @ 575w	5
	Colortran 40 Degree @ 1K	32
	ColorTran 8" Fresnel @ 1kw	18
	ALTMAN 6" FRESNEL @ 750w	9
	Selecon 4-Cell	0
	Iris	12
	Rosco I-Cue	1
	Film FX @ 1w	2
	RC4 Practical	2

TYPICAL

	EXT. ACCESSORY
	GOBO/INT. ACCESSORY
	UNIT #
	Channel

THIS DRAWING REPRESENTS VISUAL CONCEPTS AND CONSTRUCTION SUGGESTIONS ONLY. IT DOES NOT REPLACE THE KNOWLEDGE AND ADVICE OF A LICENSED STRUCTURAL ENGINEER. THE DESIGNER IS UNQUALIFIED TO DETERMINE THE STRUCTURAL APPROPRIATENESS OF THIS DESIGN AND WILL NOT ASSUME RESPONSIBILITY FOR IMPROPER ENGINEERING OR USE.



The Rep MILWAUKEE
 Patty & Jay Baker
 Theater Complex
 108 East Wells Street
 Milwaukee, WI 53202

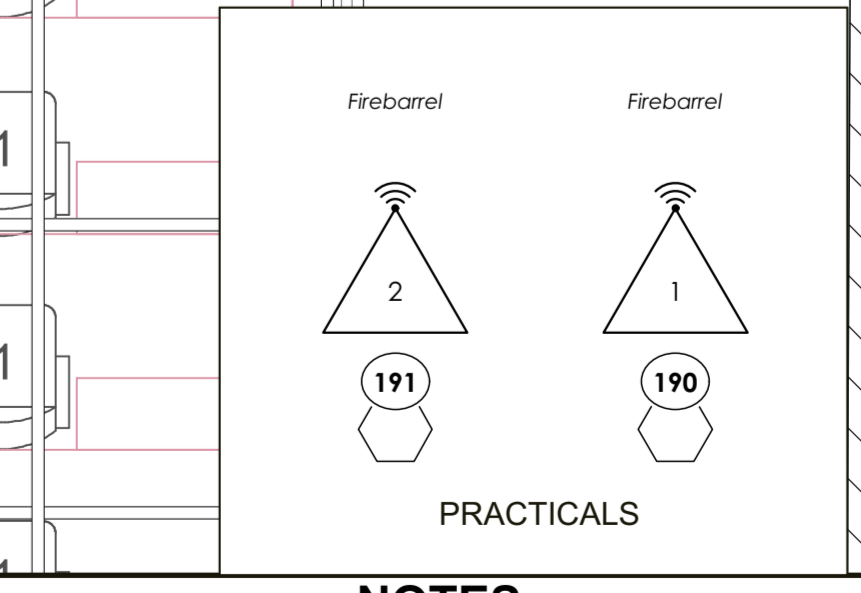
STIEMKE STUDIO	
DIRECTED BY	Multiple
SCENIC DESIGN	Libby Schultz
LIGHTING DESIGN	Shane O'Neil
MASTER ELECTR	Aaron Sigemann

Rep Lab 2017

Scale	3/8"=1'-0"	1 OF 1
Date	03/27/2017	
Revision	V2	
Drafted By	S. O'Neil	
File Name	Rep Lab Final v2018.vwx	

REVISION LOG

V2	CYC MOVE & SCROLLERS CUT	3/27/17
V1		3/16/17



- NOTES**
- Ground Row CYC-R104-(Up/Down) for horizontal spread
 - Telspar CYC-R104-(Left/Right) for vertical spread
 - Boom units placed with 1'3" centers
 - Arrow's indicated direction of fixtures to hang 90 degrees,Ch 28,38,46,56, ALL TELSPAR A CYC UNITS
 - Please have R132 & R119-7.5" & 6" cuts on hand for focus
 - Please set all fresnel to spot prior to focus
 - Please Lamp all fresnel to 1kw lamps